



enjoy
your
moment



Torino Vending Srl
tel. 011 680 45 72
torinovending@torinovending.it
www.torinovending.it



Necta

EVOCA S.p.A.
Via Roma, 24 | 24030 Valbrembo (BG), Italia | Ph. +39 035 606 111
necta.evocagroup.com



GUSTO 6L

**A thin solution
for your break**

Necta



Gusto 6 L.

A thin solution for your break

enjoy
your
moment

The perfect proposal
to match product variety
in a smaller footprint



Distinctive product attributes

For any environmental

- Flexible temperatures management till 3 different ranges to ensure maximum flexibility : Snack – Bottles – Food.
- Ambient version for the distribution of PPE or items that do not require refrigeration.
- Ideal for offices, coworking spaces, shops, small commercial centres and factories.

Increase revenue, limiting TCO

- Twin version for an efficient solution in combination with a master machine / multiple installations.
- Simplified machine re-configuration to change layout without changing the machine

Gusto wide values

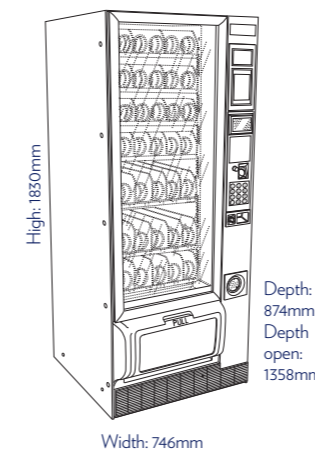
Sustainability excellence

- Class C energy label (according to IEC EN) achieved through excellent thermal insulation and use of high-efficiency R290 natural gas.
- Designed also with bio-circular plastics parts, up to 60% recyclable components and 100% recyclable packaging easy to be disposed.

Full solution with guaranteed performances

- High-performance cooling unit ensuring the best quality under demanding environmental conditions as 35°C / 65% of humidity.
- Banked with a Necta Barista coffee machine allows a complete experience with the full digital services proposition (two-way telemetry services such as TeleVend and AmiClo).

Technical data & dimension



- 230-240 V
- 50-60 Hz
- 200 W
- Configuration : base stand
- Refrigerant Gas = R290
- Noise level < 70dB
- Temperatures from 0° to 15°
- Category: 2, 3



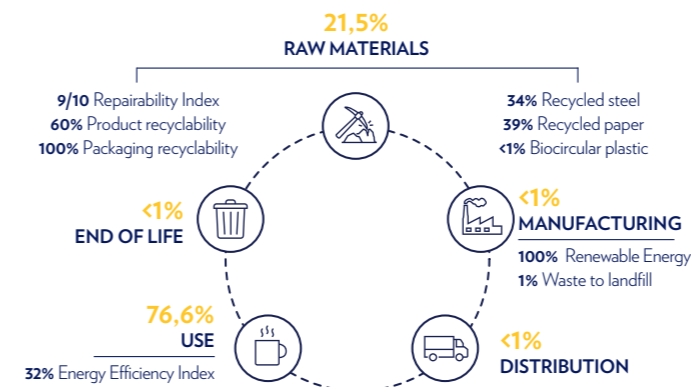
Specifications

- (wxdxh) 746 x 874 x x1830 mm
- Number of trays : max 7
- Product selection till 38
- Product capacity till 326
- Layout:
 - 100% food
 - 100% CB
 - 100% snack
 - 50% CB + 50% snack
 - 50% food + 50% snack
 - 50% food + 50% CB
 - Snack + food + CB (3T)
 - Ambient version

Product carbon footprint scorecard

Carbon footprint

- Per annum: 299 kgCO₂eq
- Cradle to cradle: 5,385 kgCO₂eq



Energy efficiency C rated



680 kWh/annum



For more information about
Sustainability at Evoca

